

6	1	203	50.8	88.9	125	15.9	2	4-ø19
NO	NPS	L	D2	D1	D	C	f	n-d1

Technical drawing of a valve assembly in cross-section. The drawing shows a central vertical stem with a handwheel at the top and a valve seat at the bottom. The valve seat is mounted on a base with two side ports. The drawing is labeled with 14 numbered callouts (1-14) and dimensions (D, D1, D2, L, C, f, n-d1).

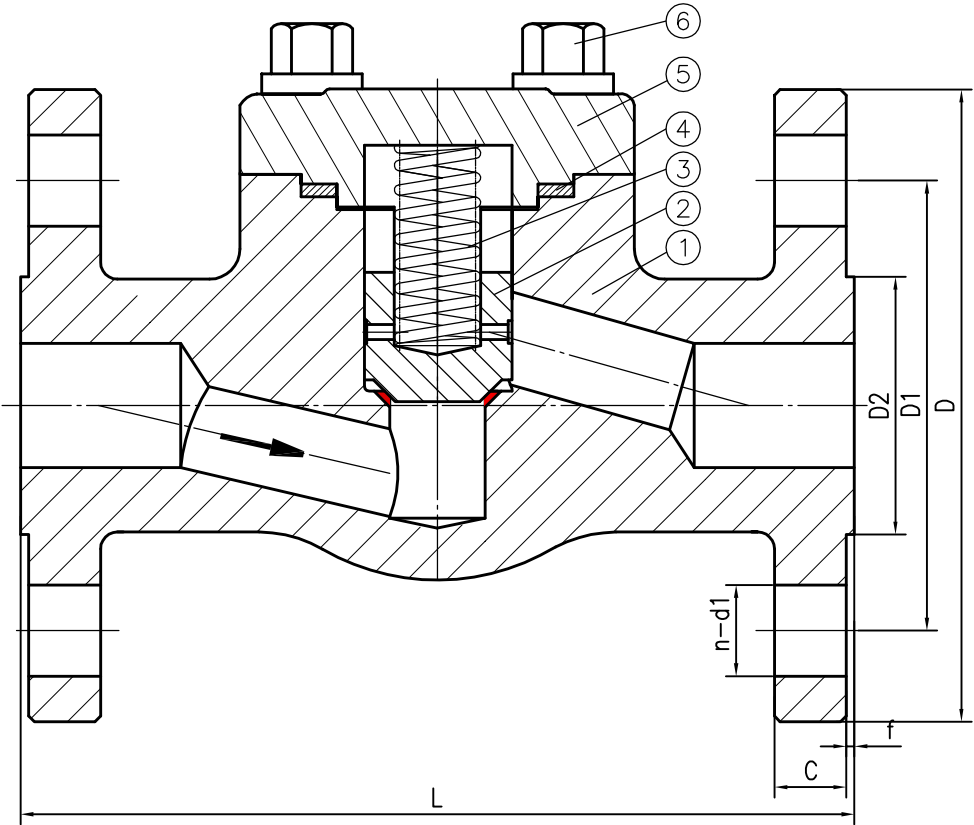
Technical Specification	
Design and manufacture	API 602
Face-to-face	ASME B16.10
Flanged ends	ASME B16.5(RF)
Pressure-Temperature class	ASME B16.34
Inspection and test	API 598

7	Packing	Graphite	14	Nut	ASTM A194 7M
6	Gasket	S.S+Graphite	13	Eyebolt	ASTM A320 L7M
5	Bolt	ASTM A320 L7M	12	Pin	C.S
4	Stem	ASTM A182 F316	11	Hand Wheel	Malleable iron
3	Disc	ASTM A182 F316+STL	10	Stem Nut	AISI 1045
2	Bonnet	ASTM A350 LF2	9	Gland Flange	ASTM A350 LF2
1	Body	ASTM A350 LF2	8	Gland	ASTM A276 410
NO.	PART NAME	MATERIAL	NO.	PART NAME	MATERIAL
MARK	QTY	FILE NO.	SIGN	DATE	
DESIGN	JASON	STANDARD			
CHECK		APPROVE	S.Parker		
TECHNOLOGY					

tag number:
CHV-RU0001A04
CHV-RU0001B04

16	1	203	50.8	88.9	125	15.9	2	4-ø19
NO	NPS	L	D2	D1	D	C	f	n-d1

WEIGHT: ≈6 Kg



Performance Specification		
Nominal Pressure		300LB
Test Pressure	Shell test	7.8
	Back seal test	--
	Seat test	5.7
	Gas test	--
		MPa
Working Temperature		-46~300 °C
Medium: water oil & gas		

Technical Specification	
Design and manufacture	API 602
Face-to-face	ASME B16.10
Flanged ends	ASME B16.5(RF)
Pressure-Temperature class	ASME B16.34
Inspection and test	API 598

CHECKED BY

PRINTED BY

OLD DRAWING NO.

BASED DRAWING NO.


SIGNATURE

DATE

3	Spring	304SS	6	Bolt	ASTM A320 L7M
2	Disc	ASTM A182 F316+STL	5	Bonnet	ASTM A350 LF2
1	Body	ASTM A350 LF2	4	Gasket	S.S+Graphite
NO.	PART NAME	MATERIAL	NO.	PART NAME	MATERIAL
MARK	QTY	FILE NO.	SIGN	DATE	Class 300 NPS 1 Piston Check Valve
DESIGN	JASON	STANDARD			
CHECK		APPROVE	S.Parker		ASSEMBLY DRAWING
TECHNOLOGY					
					DRAW REV.

tag number:
GLO-RU0001A03
GLO-RU0001B03

Technical Specification	
Design and manufacture	API 602
Face-to-face	ASME B16.10
Flanged ends	ASME B16.5(RF)
Pressure-Temperature class	ASME B16.34
Inspection and test	API 598

7	Packing	Graphite	14	Nut	ASTM A194 7M
6	Gasket	S.S+Graphite	13	Eyebolt	ASTM A320 L7M
5	Bolt	ASTM A320 L7M	12	Pin	C.S
4	Stem	ASTM A182 F316	11	Hand Wheel	Malleable iron
3	Disc	ASTM A182 F316+STL	10	Stem Nut	AISI 1045
2	Bonnet	ASTM A350 LF2	9	Gland Flange	ASTM A350 LF2
1	Body	ASTM A350 LF2	8	Gland	ASTM A276 410
NO.	PART NAME	MATERIAL	NO.	PART NAME	MATERIAL
MARK	QTY	FILE NO.	SIGN	DATE	
DESIGN	JASON	STANDARD			
CHECK		APPROVE	S.Parker		
TECHNOLOGY					
<div> <div>Class 300</div> <div>NPS 1</div> <div>GLOBE VALVE</div> </div>					DRAW REV.
					
ASSEMBLY DRAWING					

Specification Standard Sheet		
Shell Test Pressure	7.7	MPa
High Pressure Seal Test	5.7	
Back Seat Seal Pressure Test	5.7	
Low Pressure Seal Test	0.6	

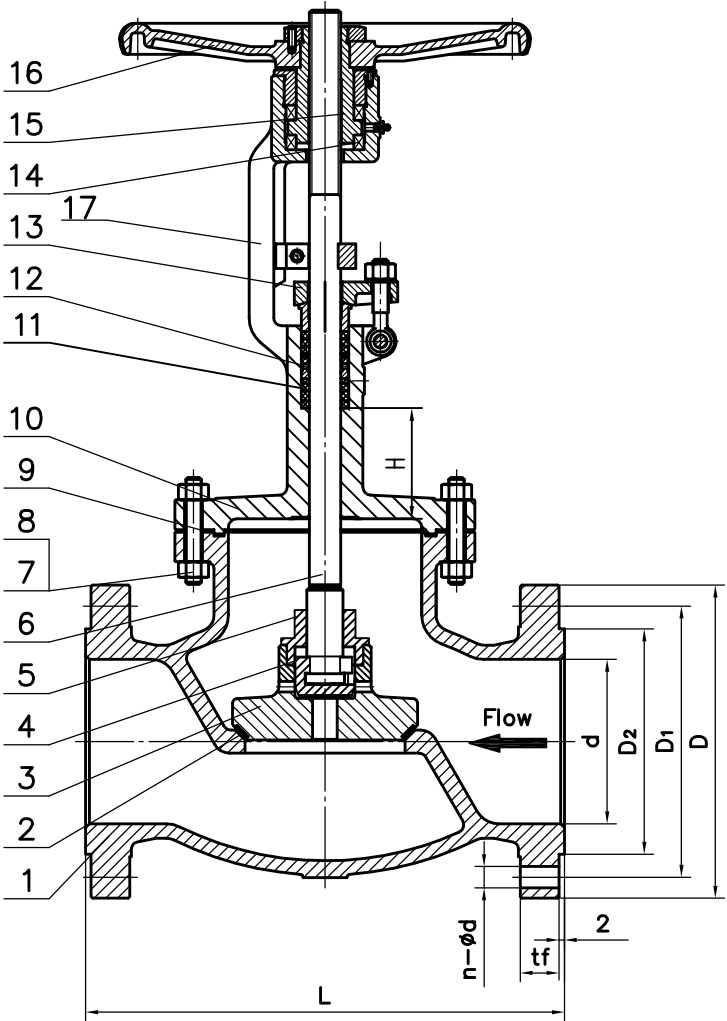
tag number:
GLO-RU0001A04
GLO-RU0001B04

WEIGHT: ≈140 Kg

		Nominal Diameter		Main Dimension mm							
Item	inch	mm	d	D	D1	D2	tf	n-ød	L	H	
27	6"	150	152	320	269.9	215.9	35.1	12-ø22	444	100	

Temperature and Pressure	ASME B16.34
Design and Manufacture	BS 1873
Face to Face Dimensions	ASME B16.10
Flange Ends Dimensions	ASME B16.5
Inspection and Test	API 598

17	Yoke	ASTM A352 LCB	
16	Hand Wheel	ASTM A536 60-40-18	
15	Plane Bearing	ASTM A295 52100	
14	Stem Nut	Copper Alloy	
13	Gland Flange	ASTM A352 LCB	
12	Stem Packing	Flexible Graphite	
11	Packing Ring	ASTM A276 304	
10	Bonnet	ASTM A352 LCB	
9	Winded Gasket	Graphite+SS304	
8	Hex. Nut	ASTM A194 7	
7	Bonnet Bolt	ASTM A320 L7	
6	Stem	ASTM A182 F316	
5	Disc Nut	SS316	
4	Small Disc	ASTM A182 F316	
3	Large Disc	ASTM A182 F316	
2	Valve Seal	INT+STL6	
1	Body	ASTM A352 LCB	
No	Parts Name	Parts Material	Remarks



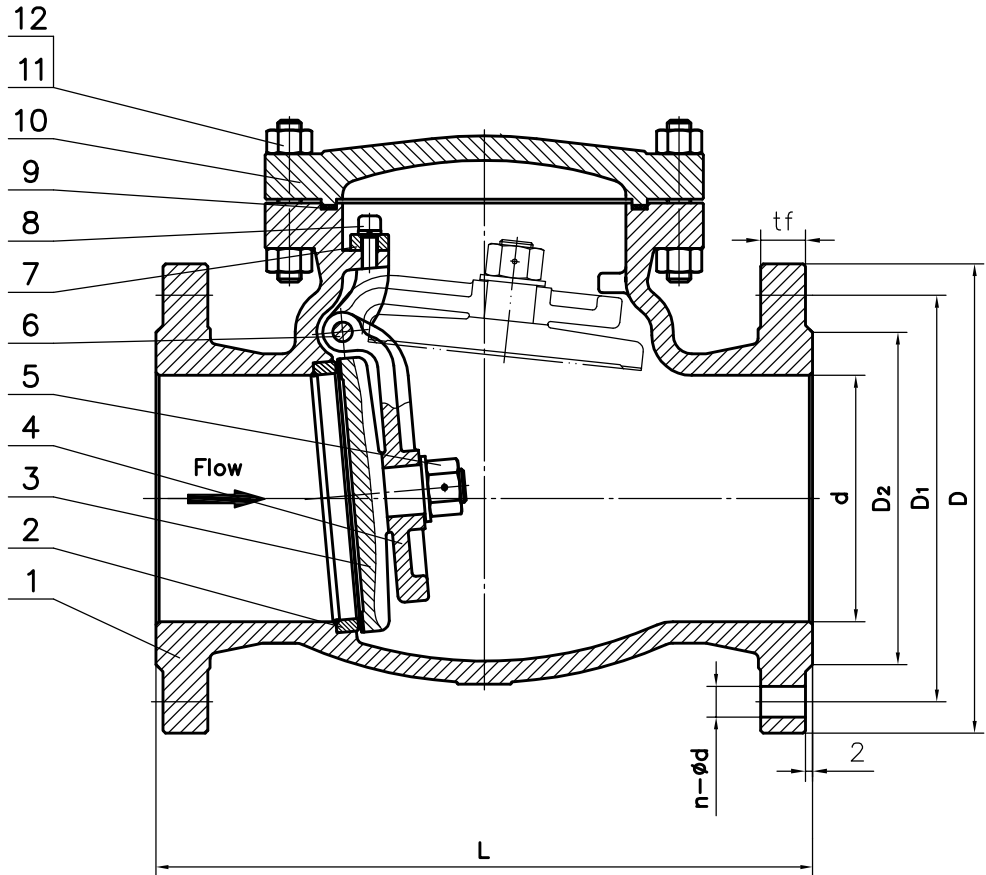
MARK	QTY	FILE NO.	SIGN	DATE	NPS 6" GLOBE VALVE ASSEMBLY DRAWING	<div>DRAW REV.</div> <div>METALLUM</div>
DESIGN	JASON	STANDARD				
CHECK		APPROVE	S.Parker			
TECHNOLOGY						

Specification Standard Sheet		
Shell Test Pressure	7.7	MPa
High Pressure Seal Test	5.7	
Suitable Temperature	-10~400℃	
Suitable Medium	Water, Steam, Oil etc	

tag number:
CHV-RU0001A03
CHV-RU0001B03

Item	Nominal Diammeter		Main Dimension <small>mm</small>						
	inches	mm	d	D	D1	D2	tf	n- ϕ d	L
29	2"	50	49	165	127	92.1	20.6	8- ϕ 19	267

WEIGHT: \approx 19 Kg



Temperature and Pressure	ASME B16.34
Design and Manufacture	API 6D
Face to Face Dimensions	ASME B16.10
Flanged Fittings Dimensions	ASME B16.5
Inspection and Test	API 598

12	Cover Bolt	ASTM A193 B7	
11	Cover Nut	ASTM A194 2H	
10	Cover	ASTM A216 WCB	
9	Gasket	Graphite+SS	
8	Yoke Bolt	Carbon Steel	
7	Yoke	ASTM A216 WCB	
6	Pin	ASTM A276 316	
5	Disc Nut	Carbon Steel	
4	Hinge	ASTM A216 WCB	
3	Disc	ASTM A182 F316	
2	Seat Ring	ASTM A105+STL6	
1	Body	ASTM A216 WCB	
No	Parts Name	Parts Material	Remarks

					Class 300 NPS 2 CHCEK VALVE	DRAW REV.
MARK	QTY	FILE NO.	SIGN	DATE		
DESIGN	JASON	STANDARD			ASSEMBLY DRAWING	
CHECK		APPROVE	S.Parker			
TECHNOLOGY						

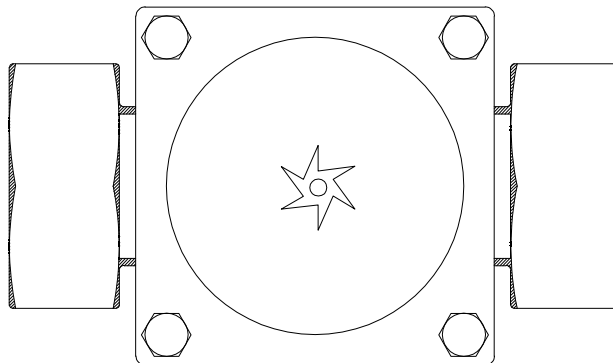
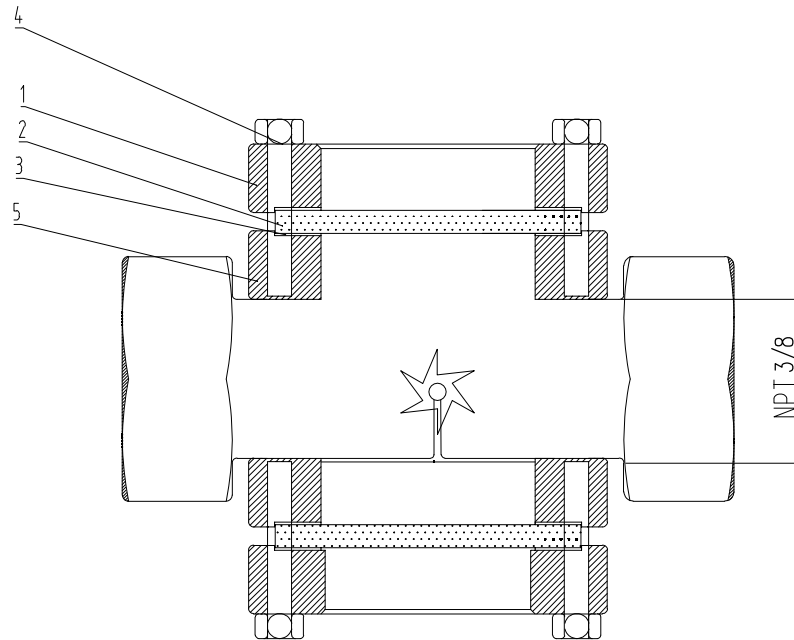
SG-RU0001A01
SG-RU0001A02
SG-RU0001B01
SG-RU0001B02

tag number:

SG-RU0001A01
SG-RU0001B01

31&32	3/8
NO	NPS

WEIGHT: ≈2Kg



Performance Specification			
Test Pressure	Nominal Pressure	2.0	MPa
	Shell test	2.5	
	Back seal test	--	
	Seat test	--	
	Gas test	--	
Working Temperature		-29~120	℃
Medium: water oil & gas			

6	Impeller	PTFE
5	Body	SS316
4	Bolt	SS304
3	Gasket	PTFE
2	Window	Glass
1	Bonnet	SS304
NO.	PART NAME	MATERIAL

CHECKED BY


PRINTED BY

OLD DRAWING NO.

BASED DRAWING NO.

SIGNATURE

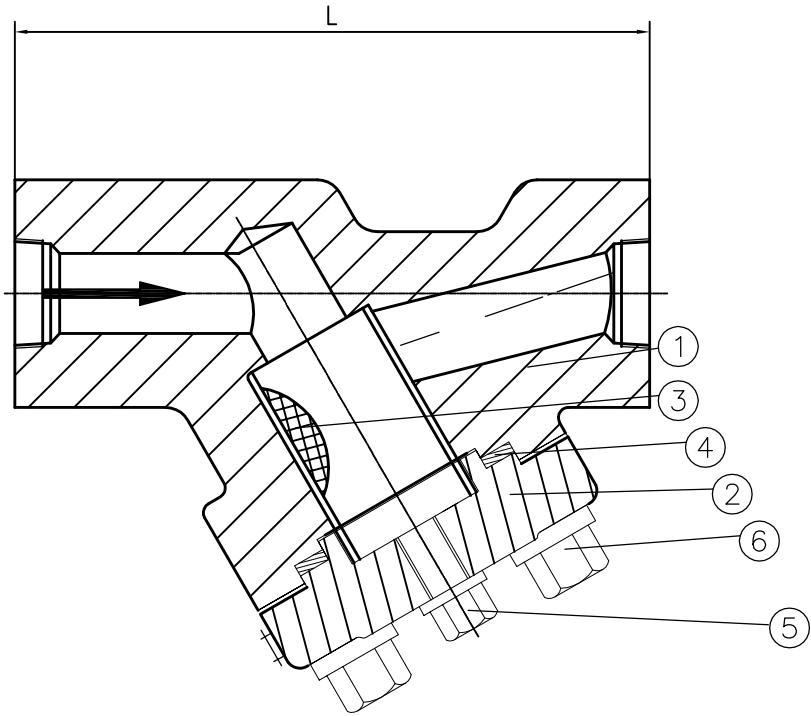
DATE

						PN20 NPS 3/8 SIGHT GLASS	DRAW REV.
MARK	QTY	FILE NO.	SIGN	DATE		ASSEMBLY DRAWING	
DESIGN	JASON	STANDARD					
CHECK		APPROVE	S.Parker				
TECHNOLOGY							

tag number:
YST-RU0001A02
YST-RU0001B02

34	1/2	98	1/2
NO	NPS	L	NPT

MESH: 100
WEIGHT: ≈2Kg



Performance Specification			
Test Pressure	Nominal Pressure	300LB	MPa
	Shell test	7.5	
	Back seal test	--	
	Seat test	--	
Working Temperature	Gas test	--	℃
	Medium: water oil & gas		

Technical Specification
1. Design and manufacture: API 602
2. Face-to-face: Manufacturer's standard
3. Thread ends: ASME B1.20.1
4. Inspection and test: API 598

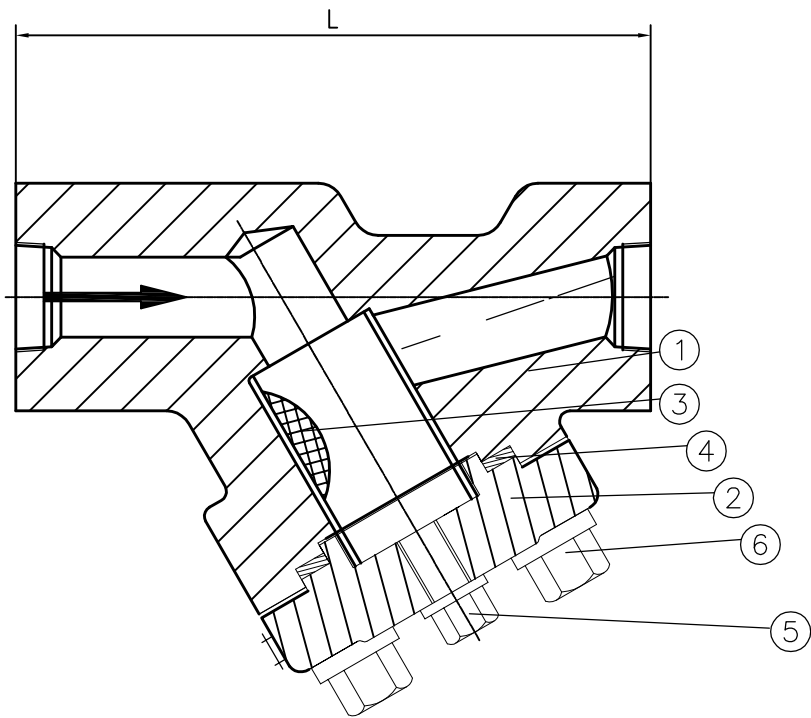
CHECKED BY
PRINTED BY
OLD DRAWING NO.
BASED DRAWING NO.
SIGNATURE
DATE

3	Filter Screen	SS316	6	Bolt	ASTM A320 L7
2	Bonnet	ASTM A350 LF2	5	Drain	S.S
1	Body	ASTM A350 LF2	4	Gasket	S.S+Graphite
NO.	PART NAME	MATERIAL	NO.	PART NAME	MATERIAL
MARK	QTY	FILE NO.	SIGN	DATE	
DESIGN	JASON	STANDARD			
CHECK		APPROVE	S.Parker		
TECHNOLOGY					
Class 300 NPS 1/2 Y-Strainer					DRAW REV.
ASSEMBLY DRAWING					

tag number:
YST-RU0001A01
YST-RU0001B01

33	3/8	98	3/8
NO	NPS	L	NPT

MESH: 100
WEIGHT: ≈2Kg



Performance Specification			
Nominal Pressure		300LB	MPa
Test Pressure	Shell test	7.5	
	Back seal test	--	
	Seat test	--	
	Gas test	--	
Working Temperature		-29~120	℃
Medium: water oil & gas			

Technical Specification

1. Design and manufacture: API 602
2. Face-to-face: Manufacturer's standard
3. Thread ends: ASME B1.20.1
4. Inspection and test: API 598

CHECKED BY
PRINTED BY
OLD DRAWING NO.
BASED DRAWING NO.
SIGNATURE
DATE

3	Filter Screen	SS316	6	Bolt	ASTM A193 B7
2	Bonnet	ASTM A105N	5	Drain	C.S
1	Body	ASTM A105N	4	Gasket	S.S+Graphite
NO.	PART NAME	MATERIAL	NO.	PART NAME	MATERIAL
MARK	QTY	FILE NO.	SIGN	DATE	
DESIGN	JASON	STANDARD			
CHECK		APPROVE	S.Parker		
TECHNOLOGY					
Class 300 NPS 3/8 Y-Strainer					DRAW REV.
ASSEMBLY DRAWING					